

Fallbrook Regional HEALTH DISTRICT

AGENDA SPECIAL BOARD MEETING/PUBLIC HEARING Monday, February 14, 2022, 5:30 p.m.

In accordance with California Government Code Section 54953 teleconferencing will be used for this meeting. Board members, staff and members of the public will be able to participate by webinar by using the following link:

<https://us02web.zoom.us/j/85411076063?pwd=N2dBKzJBWHRZdDc4V29qNm83QnILUT09>

Meeting ID: **854 1107 6063**. 854 1107 6063 Participants will need to download the Zoom app on their mobile device. Members of the public will also be able to participate by telephone using the following dial in information: **Dial in #: (310) 372-7549, Passcode 660448**.

A. CALL MEETING TO ORDER / ROLL CALL / ESTABLISH A QUORUM / PLEDGE OF ALLEGIANCE

A Special Meeting may be called at any time by the President, or three Board members, by delivering notice to each Board member and to each local newspaper or general circulation, radio, or television station requesting such notice in writing, personally or by mail. Such notice must be delivered personally or by mail at least twenty-four (24) hours before the time of such meeting as specified in the notice. The call and notice shall specify the time and place of the special meeting and the business to be transacted. No other business shall be considered at special meetings. Such written notice may be dispensed with as to any Board member, who at, or prior to the time the meeting convenes, files with the Secretary a written waiver of notice. Such waiver may be given by telegram. Such written notice may also be dispensed with as to any member who is actually present at the meeting at the time it convenes.

B. APPROVAL OF THE AGENDA

C. PUBLIC COMMENTS

Opportunity for board members and citizens to speak on items of interest within subject matter jurisdiction of the District. Please note that, for comments made on items not appearing on the current agenda, the Board may take no action as to the comment at the current meeting (Gov't Code 54954.3[a]), and the Board is allowed only a brief response to the speaker's comment. For the record, please state your name. "Request to speak" cards should be filled out in advance and presented to the Board Chair or the recording secretary. The Board has a policy limiting any speaker to not more than five minutes.

D. PRESENTATION

D1. Presentation by National Demographics Corporation and Public Hearing for Redistricting in accordance with Election Code 22001

E. ADJOURNMENT

NOTE: I certify that on Thursday, February 10, 2022 I posted a copy of the foregoing agenda near the regular meeting place of the Board of Directors of Fallbrook Regional Health District, said time being at least 24 hours in advance of the meeting. The American with Disabilities Act provides that no qualified individual with a disability shall be excluded from participation in, or denied the benefits of District business. If you need assistance to participate in this meeting, please contact the District office 24 hours prior to the meeting at 760-731-9187.



Board Secretary/Clerk

Fallbrook Regional HEALTH DISTRICT

Redistricting 2022

Why Is Redistricting Necessary?

- The District adopted Resolution No. 428 on June 19, 2019 proactively establishing zone-based elections, adopting map and election sequence based on 2010 Census, as required.
- By-district means the voters in each individual zone vote for a representative residing in that zone.
- The first by-zone elections:
 - 2020 – Zones 2 and 4
 - 2022 – Zones 1, 3 and 5
- Every 10 years the federal government conducts the Census, requiring review of zones to insure balanced population.

Role of the Board

- **Ensure compliance with procedural requirements**
 - Hold public hearings
 - Adopt new zone map before statutory deadline.
- **Provide direction to staff and consultants**
 - NDC has prepared two draft maps for Board consideration that meet compliance with federal requirement for equal population.
 - Board may provide additional guidance to demographer on zone boundaries prior to finalizing the map.

Redistricting Rules and Goals

Federal Laws

- Equal Population
- Federal Voting Rights Act
- No Racial Gerrymandering



Traditional (Re)Districting Principles

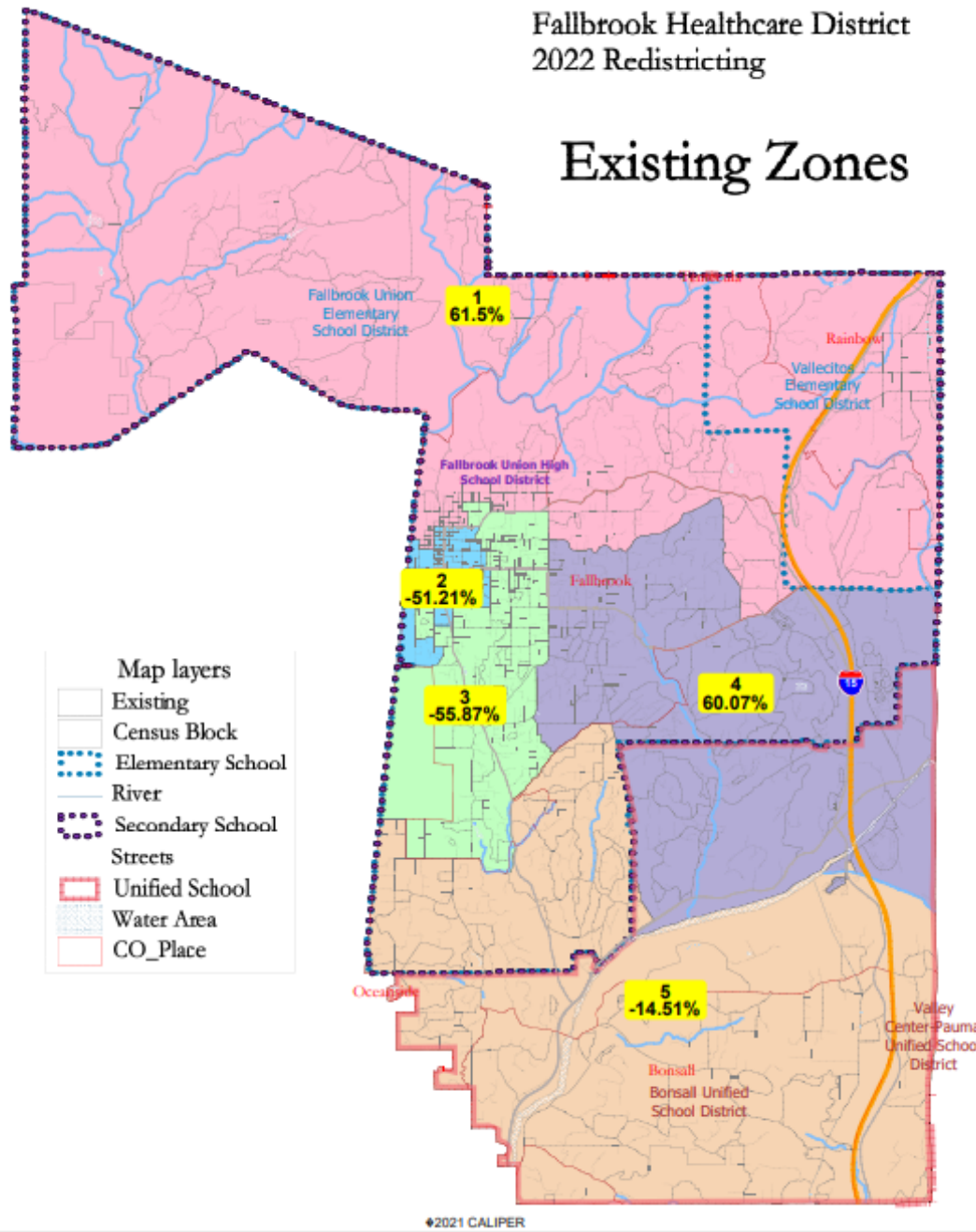
- Topography/Geography
- Visible/Identifiable Boundaries (Natural & man-made)
- Contiguous
- Compact
- Communities of Interest
- Respect voters' choices / continuity in office
- Planned future growth
- Minimizing number of voters with election-year delays

Communities/Neighborhoods

- Shared interests, views, values, common characteristics
- Geographic area
- Natural dividing lines (roads, canals, creeks)
- Areas around parks, schools, neighborhood landmarks
- Neighborhood development
- Common issues, common legislative/policy concerns
- Shared social or economic interests
 - Income
 - Education
 - Cultural traditions
 - Language spoken at home
 - Types of housing – acreages, senior community

Fallbrook Healthcare District
2022 Redistricting

Existing Zones



- Not Population Balanced – 117.37%
- Population decreases in Zones 2, 3 & 5
- Population Increases in Zones 1 and 4

Calculating Population Balance

Ideal Zone size = **11,268**

- Divide District's total population by number of Zones
- $56,339 / 5 = 11,268$

Total deviation = **13,225**

- Subtract smallest Zone's population from largest Zone's population
- $Z1 (18,198) - Z3 (4,973) = 13,225$

Total deviation % = **117.37**

- Calculated by dividing total deviation by ideal Zone size
- $13,225 / 11,268 = 117.37\%$

Or Spread/Difference Between Least and Highest Population Deviation

- $-55.87 + 61.50 = 117.37\%$

Population Comparison

Fallbrook Regional Health Care

Population

Census Data	Zone 1	Zone 2	Zone 3	Zone 4	Zone 5	Total	Deviation
2010	10,067	10,641	9,859	10,378	10,013	50,958	7.67%
2020	18,198	5,498	4,973	18,037	9,633	56,339	117.37%
Difference	8,131	-5,143	-4,886	7,659	-380	5,381	

2020 Demographics by Zone

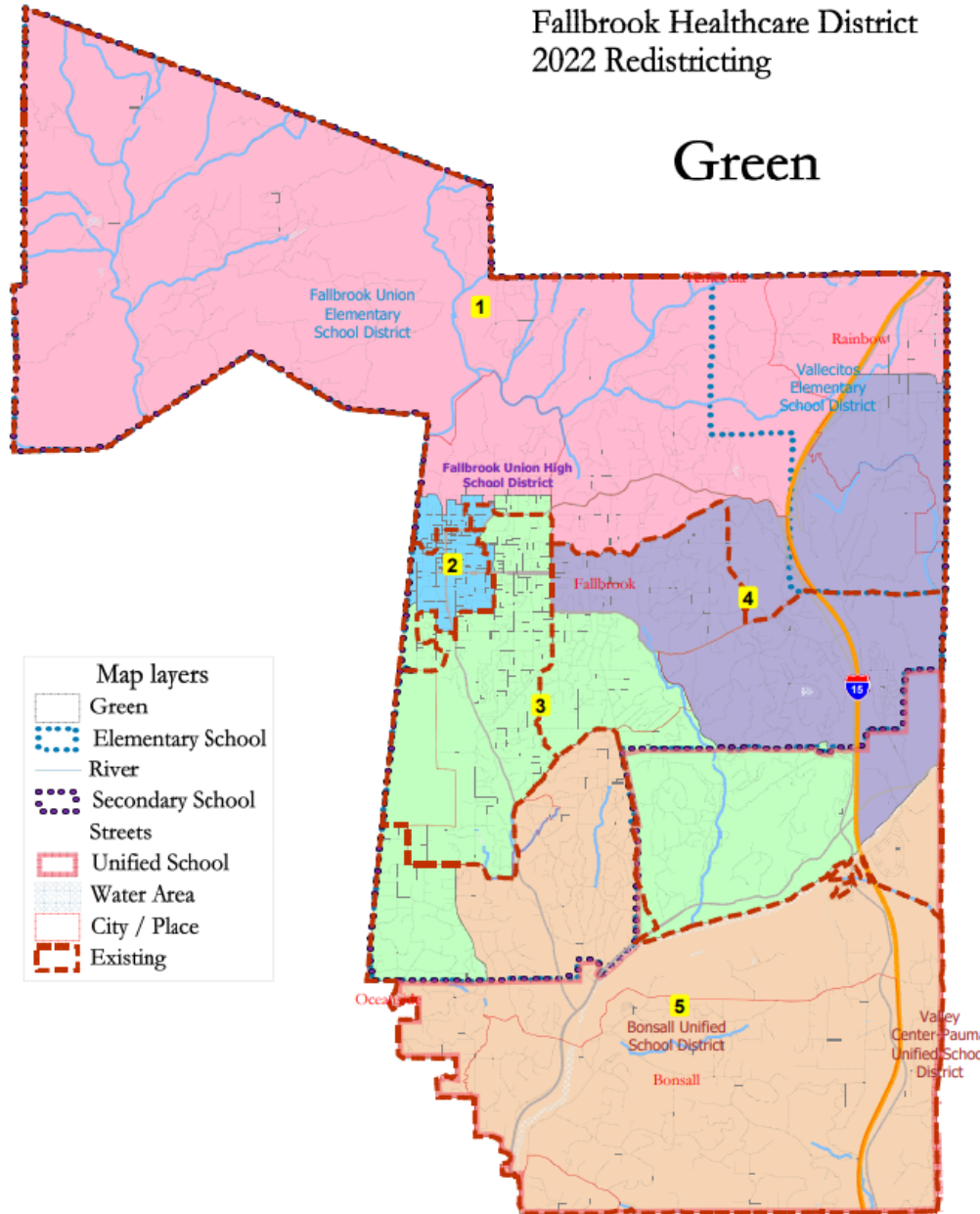
		Existing Zones					
District		1	2	3	4	5	Total
	Total Pop	18,196	5,498	4,973	18,037	9,633	56,339
	Deviation from ideal	6,930	-5,770	-6,295	6,769	-1,635	13,225
	% Deviation	61.50%	-51.21%	-55.87%	60.07%	-14.51%	117.37%
Total Pop	% Hisp	29.1%	31%	46%	52%	33%	39%
	% NH White	62%	55%	44%	39%	57%	51%
	% NH Black	2%	2%	2%	2%	1%	2%
	% Asian-American	4%	7%	5%	4%	5%	5%
	Total	13,599	3,394	3,178	10,673	6,634	37,478
Citizen Voting Age Pop	% Hisp	18%	24%	30%	33%	25%	25%
	% NH White	75%	70%	57%	57%	69%	67%
	% NH Black	2%	2%	2%	4%	1%	2%
	% Asian/Pac Isl.	4%	3%	10%	5%	4%	5%
	Total	12,581	3,448	3,081	9,294	6,174	34,578
Voter Registration (Nov 2020)	Total	12,581	3,448	3,081	9,294	6,174	34,578
	% Latino est.	17%	22%	30%	30%	19%	22%
	% Spanish-Surnamed	15%	20%	27%	27%	17%	20%
	% Asian-Surnamed	2%	2%	1%	1%	2%	2%
	% Filipino-Surnamed	1%	2%	2%	1%	1%	1%
	% NH White est.	80%	72%	67%	67%	78%	74%
	% NH Black	2%	3%	3%	3%	1%	2%
Voter Turnout (Nov 2020)	Total	10,904	2,570	2,576	7,638	5,287	29,375
	% Latino est.	15%	20%	28%	26%	16%	20%
	% Spanish-Surnamed	14%	18%	24%	24%	15%	18%
	% Asian-Surnamed	1%	2%	1%	1%	2%	2%
	% Filipino-Surnamed	1%	1%	1%	1%	1%	1%
	% NH White est.	82%	74%	70%	70%	80%	77%
	% NH Black	2%	3%	3%	3%	1%	2%
Voter Turnout (Nov 2018)	Total	8,471	1,870	1,717	5,370	4,638	21,568
	% Latino est.	11%	16%	22%	20%	14%	15%
	% Spanish-Surnamed	10%	15%	20%	19%	13%	14%
	% Asian-Surnamed	1%	1%	1%	1%	2%	1%
	% Filipino-Surnamed	1%	1%	2%	1%	0%	1%
	% NH White est.	86%	80%	74%	76%	83%	81%
	% NH Black est.	2%	2%	2%	2%	1%	2%
ACS Pop. Est.	Total	17,426	4,591	4,799	17,672	9,142	53,540
Age	age0-19	21%	20%	26%	27%	26%	24%
	age20-60	45%	47%	50%	53%	46%	48%
	age60plus	35%	33%	23%	20%	28%	28%
Immigration	immigrants	17%	20%	18%	24%	19%	20%
	naturalized	58%	56%	56%	48%	66%	55%
Language spoken at home	english	80%	75%	69%	58%	74%	70%
	spanish	15%	20%	25%	39%	22%	25%
	asian-lang	2%	3%	3%	2%	2%	2%
	other lang	3%	2%	3%	2%	2%	2%
Language Fluency	Speaks Eng. "Less than Very Well"	6%	7%	8%	19%	8%	11%
Education (among those age 25+)	hs-grad	46%	48%	49%	44%	41%	45%
	bachelor	22%	20%	21%	17%	24%	21%
	graduatedegree	15%	11%	8%	9%	13%	12%
Child in Household	child-under18	26%	25%	36%	37%	31%	31%
Pct of Pop. Age 16+	employed	54%	55%	61%	62%	57%	58%
Household Income	income 0-25k	12%	9%	15%	16%	12%	13%
	income 25-50k	15%	24%	24%	22%	20%	20%
	income 50-75k	16%	15%	16%	19%	15%	17%
	income 75-200k	44%	43%	38%	37%	41%	41%
	income 200k-plus	12%	9%	8%	6%	13%	10%
Housing Status	single family	93%	91%	77%	70%	84%	83%
	multi-family	7%	9%	23%	30%	16%	17%
	rented	21%	26%	38%	43%	33%	32%
	owned	79%	74%	62%	57%	67%	68%

Total population data from the 2020 Decennial Census.
Surname-based Voter Registration and Turnout data from the California Statewide Database.

Ideal Zone Size:
Each of the 5 zones
must contain about
11,268 people

Fallbrook Healthcare District 2022 Redistricting

Green



Population balanced
3.8% Deviation

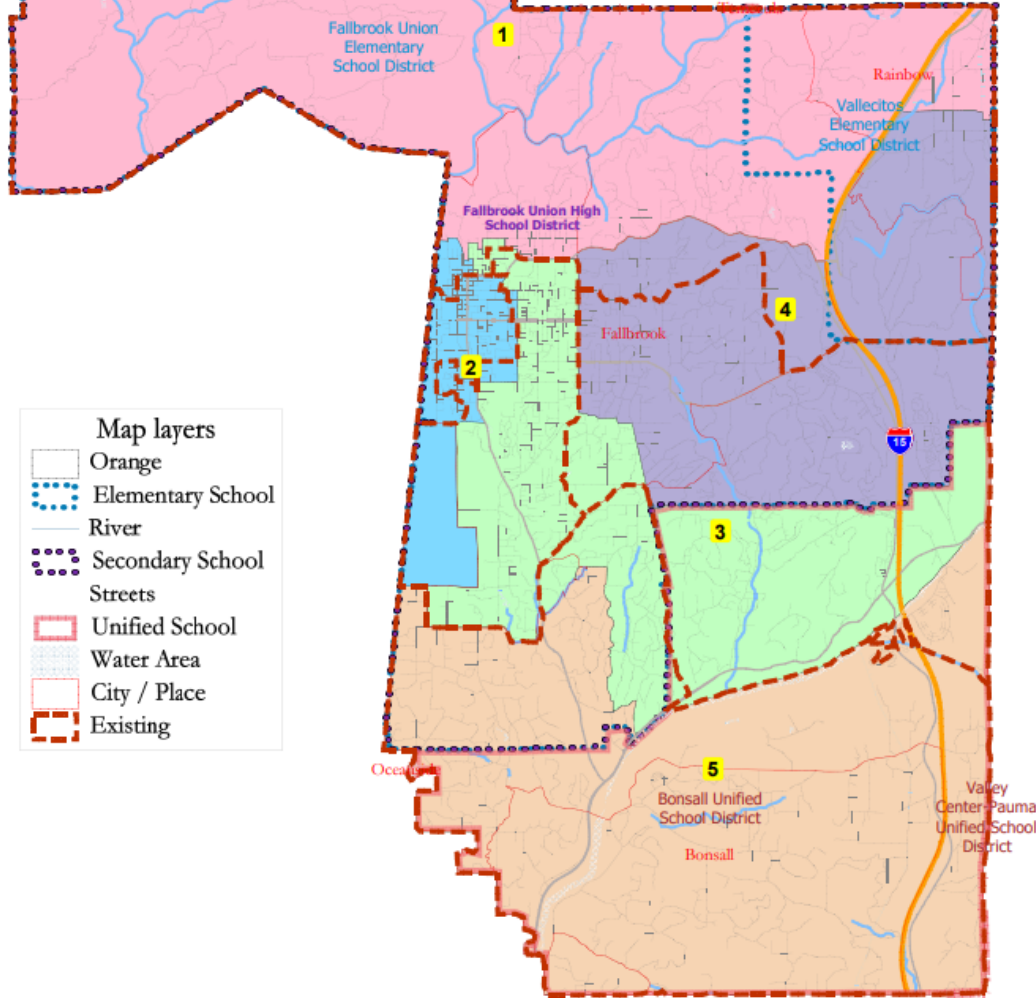


Green Demographic Summary

Green							
District		1	2	3	4	5	Total
	Total Pop	11,312	11,126	11,497	11,069	11,335	58,339
	Deviation from ideal	44	-142	229	-199	67	428
	% Deviation	0.39%	-1.26%	2.03%	-1.77%	0.59%	3.80%
Total Pop	% Hisp	31.9%	28%	34%	60%	40%	39%
	% NH White	60%	60%	55%	31%	51%	51%
	% NH Black	1%	2%	2%	3%	2%	2%
	% Asian-American	4%	6%	6%	4%	5%	5%
Citizen Voting Age Pop	Total	8,531	7,641	7,987	5,788	7,532	37,478
	% Hisp	20%	20%	23%	37%	30%	25%
	% NH White	75%	73%	66%	53%	64%	67%
	% NH Black	1%	2%	2%	6%	1%	2%
	% Asian/Pac.Isl.	3%	4%	8%	3%	4%	5%

Fallbrook Healthcare District
2022 Redistricting

Orange



Population balanced
1.7% Deviation

- Map layers
- Orange
 - Elementary School
 - River
 - Secondary School
 - Streets
 - Unified School
 - Water Area
 - City / Place
 - Existing

©2021 CALIPER



Orange Demographic Summary

Orange							
District		1	2	3	4	5	Total
	Total Pop	11,199	11,390	11,214	11,318	11,218	56,339
	Deviation from ideal	-69	122	-54	50	-50	191
	% Deviation	-0.61%	1.08%	-0.48%	0.44%	-0.44%	1.70%
Total Pop	% Hisp	32.1%	35%	34%	53%	40%	39%
	% NH White	59%	54%	55%	38%	50%	51%
	% NH Black	1%	2%	2%	3%	2%	2%
	% Asian-American	4%	5%	6%	4%	5%	5%
Citizen Voting Age Pop	Total	8,447	7,614	7,609	6,292	7,517	37,478
	% Hisp	20%	25%	21%	34%	29%	25%
	% NH White	75%	68%	69%	56%	64%	67%
	% NH Black	1%	2%	3%	5%	2%	2%
	% Asian/Pac. Isl.	3%	5%	6%	4%	5%	5%

Redistricting Timeline

Date	Event(s)
February 14, 2022	<ul style="list-style-type: none">- NDC presents demographic analysis to for public/Board input- NDC presents draft maps for input
March 5, 2022	<ul style="list-style-type: none">- NDC presents adjusted maps- Receive input- Possible adoption
April 17, 2022	Deadline Goal to Adopt Map
November 8, 2022	Election with New Map for Zones 1, 3, & 5

QUESTIONS?

COMMENTS

		Green					
District		1	2	3	4	5	Total
	Total Pop	11,312	11,126	11,467	11,069	11,335	56,339
	Deviation from ideal	-44	-142	229	-199	67	428
	% Deviation	0.39%	-1.26%	2.03%	-1.77%	0.59%	3.80%
Total Pop	% Hisp	31.9%	28%	34%	60%	46%	39%
	% NH White	60%	60%	55%	31%	51%	51%
	% NH Black	1%	2%	2%	3%	2%	2%
	% Asian-American	4%	6%	6%	4%	5%	5%
	Total	8,531	7,641	7,987	5,768	7,532	37,478
Citizen Voting Age Pop	% Hisp	20%	20%	23%	37%	30%	25%
	% NH White	75%	73%	66%	53%	64%	67%
	% NH Black	1%	2%	2%	6%	1%	2%
	% Asian/Pac Isl.	3%	4%	8%	3%	4%	5%
	Total	7,478	7,577	7,750	5,082	6,891	34,578
Voter Registration (Nov 2020)	% Latino est.	18%	18%	21%	36%	23%	22%
	% Spanish-Surnamed	16%	17%	19%	33%	21%	20%
	% Asian-Surnamed	1%	2%	1%	1%	2%	2%
	% Filipino-Surnamed	1%	1%	1%	2%	1%	1%
	% NH White est.	80%	77%	76%	59%	73%	74%
	% NH Black	1%	3%	2%	4%	1%	2%
Voter Turnout (Nov 2020)	Total	6,471	6,562	6,664	4,028	5,650	29,375
	% Latino est.	16%	16%	18%	32%	20%	20%
	% Spanish-Surnamed	15%	15%	17%	29%	19%	18%
	% Asian-Surnamed	1%	2%	1%	2%	2%	2%
	% Filipino-Surnamed	1%	1%	1%	1%	1%	1%
	% NH White est.	82%	79%	79%	63%	76%	77%
Voter Turnout (Nov 2018)	Total	5,071	4,756	4,918	2,605	4,216	21,566
	% Latino est.	11%	12%	14%	24%	17%	15%
	% Spanish-Surnamed	11%	11%	13%	23%	16%	14%
	% Asian-Surnamed	1%	1%	1%	2%	2%	1%
	% Filipino-Surnamed	1%	1%	1%	1%	1%	1%
	% NH White est.	86%	83%	83%	71%	79%	81%
ACS Pop. Est.	Total	11,140	9,839	11,268	10,528	10,825	53,540
Age	age0-19	21%	19%	25%	29%	27%	24%
	age20-60	45%	46%	48%	55%	48%	48%
	age60plus	34%	35%	27%	16%	25%	28%
Immigration	immigrants	17%	19%	19%	26%	20%	20%
	naturalized	56%	59%	54%	47%	63%	55%
Language spoken at home	english	79%	86%	73%	52%	68%	70%
	spanish	16%	16%	22%	46%	28%	25%
	asian-lang	2%	2%	2%	1%	2%	2%
	other lang	4%	2%	2%	1%	2%	2%
Language Fluency	Speaks Eng. "Less than Very Well"	7%	5%	9%	22%	11%	11%
Education (among those age 25+)	hs-grad	46%	47%	44%	44%	44%	45%
	bachelor	22%	21%	23%	16%	21%	21%
	graduatedegree	15%	13%	13%	6%	11%	12%
Child in Household	child-under18	27%	25%	32%	39%	35%	31%
Pct of Pop. Age 16+	employed	52%	55%	58%	65%	58%	58%
Household Income	income 0-25k	14%	9%	13%	17%	13%	13%
	income 25-50k	15%	19%	18%	24%	22%	20%
	income 50-75k	17%	15%	16%	22%	15%	17%
	income 75-200k	43%	44%	43%	33%	40%	41%
	income 200k-plus	11%	13%	10%	5%	10%	10%
Housing Status	single family	92%	92%	86%	59%	81%	83%
	multi-family	8%	7%	14%	41%	19%	17%
	rented	23%	21%	28%	53%	36%	32%
	owned	77%	79%	72%	47%	64%	68%



		Orange					
District		1	2	3	4	5	Total
	Total Pop	11,199	11,390	11,214	11,318	11,218	56,339
	Deviation from ideal	-89	122	-54	50	-50	191
	% Deviation	-0.61%	1.08%	-0.48%	0.44%	-0.44%	1.70%
Total Pop	% Hisp	32.1%	35%	34%	53%	40%	39%
	% NH White	59%	54%	55%	38%	50%	51%
	% NH Black	1%	2%	2%	3%	2%	2%
	% Asian-American	4%	5%	6%	4%	5%	5%
Citizen Voting Age Pop	Total	8,447	7,614	7,609	6,292	7,517	37,478
	% Hisp	20%	25%	21%	34%	29%	25%
	% NH White	75%	68%	69%	56%	64%	67%
	% NH Black	1%	2%	3%	5%	2%	2%
	% Asian/Pac. Isl.	3%	5%	6%	4%	5%	5%
Voter Registration (Nov 2020)	Total	7,388	7,267	7,171	5,811	6,941	34,578
	% Latino est.	18%	23%	19%	31%	23%	22%
	% Spanish-Surnamed	17%	21%	17%	28%	21%	20%
	% Asian-Surnamed	1%	2%	2%	1%	2%	2%
	% Filipino-Surnamed	1%	1%	1%	1%	1%	1%
	% NH White est.	79%	74%	76%	65%	74%	74%
	% NH Black	1%	2%	3%	3%	1%	2%
Voter Turnout (Nov 2020)	Total	6,375	6,190	6,203	4,723	5,884	29,375
	% Latino est.	16%	20%	17%	27%	20%	20%
	% Spanish-Surnamed	15%	19%	15%	24%	18%	18%
	% Asian-Surnamed	1%	2%	2%	1%	2%	2%
	% Filipino-Surnamed	1%	1%	1%	1%	1%	1%
	% NH White est.	81%	76%	78%	69%	76%	77%
	% NH Black	1%	2%	3%	3%	1%	2%
Voter Turnout (Nov 2018)	Total	5,015	4,357	4,633	3,190	4,371	21,566
	% Latino est.	12%	15%	14%	20%	16%	15%
	% Spanish-Surnamed	11%	14%	13%	18%	15%	14%
	% Asian-Surnamed	1%	1%	1%	1%	2%	1%
	% Filipino-Surnamed	1%	1%	1%	1%	1%	1%
	% NH White est.	86%	82%	82%	76%	80%	81%
	% NH Black est.	1%	2%	3%	3%	1%	2%
ACS Pop. Est.	Total	11,035	10,414	10,462	10,637	10,991	53,540
Age	age0-19	21%	21%	22%	28%	28%	24%
	age20-60	45%	47%	49%	53%	48%	48%
	age60plus	34%	32%	29%	19%	23%	28%
Immigration	immigrants	17%	20%	19%	25%	20%	20%
	naturalized	56%	54%	58%	48%	61%	55%
Language spoken at home	english	79%	75%	75%	55%	68%	70%
	spanish	16%	21%	21%	41%	28%	25%
	asian-lang	2%	2%	3%	2%	2%	2%
	other lang	4%	3%	1%	2%	2%	2%
Language Fluency	Speaks Eng "Less than Very Well"	7%	7%	9%	20%	11%	11%
Education (among those age 25+)	hs-grad	46%	48%	44%	44%	44%	45%
	bachelor	22%	21%	21%	17%	22%	21%
	graduatedegree	14%	11%	14%	8%	11%	12%
Child in Household	child-under18	27%	28%	29%	37%	37%	31%
Pct of Pop. Age 16+	employed	52%	55%	59%	64%	58%	58%
Household Income	income 0-25k	14%	12%	12%	16%	13%	13%
	income 25-50k	15%	23%	17%	21%	21%	20%
	income 50-75k	17%	16%	16%	20%	14%	17%
	income 75-200k	43%	40%	43%	36%	41%	41%
	income 200k-plus	11%	9%	12%	6%	11%	10%
Housing Status	single family	92%	89%	88%	65%	81%	83%
	multi-family	8%	14%	12%	35%	19%	17%
	rented	23%	28%	26%	47%	37%	32%
	owned	77%	72%	74%	53%	63%	68%

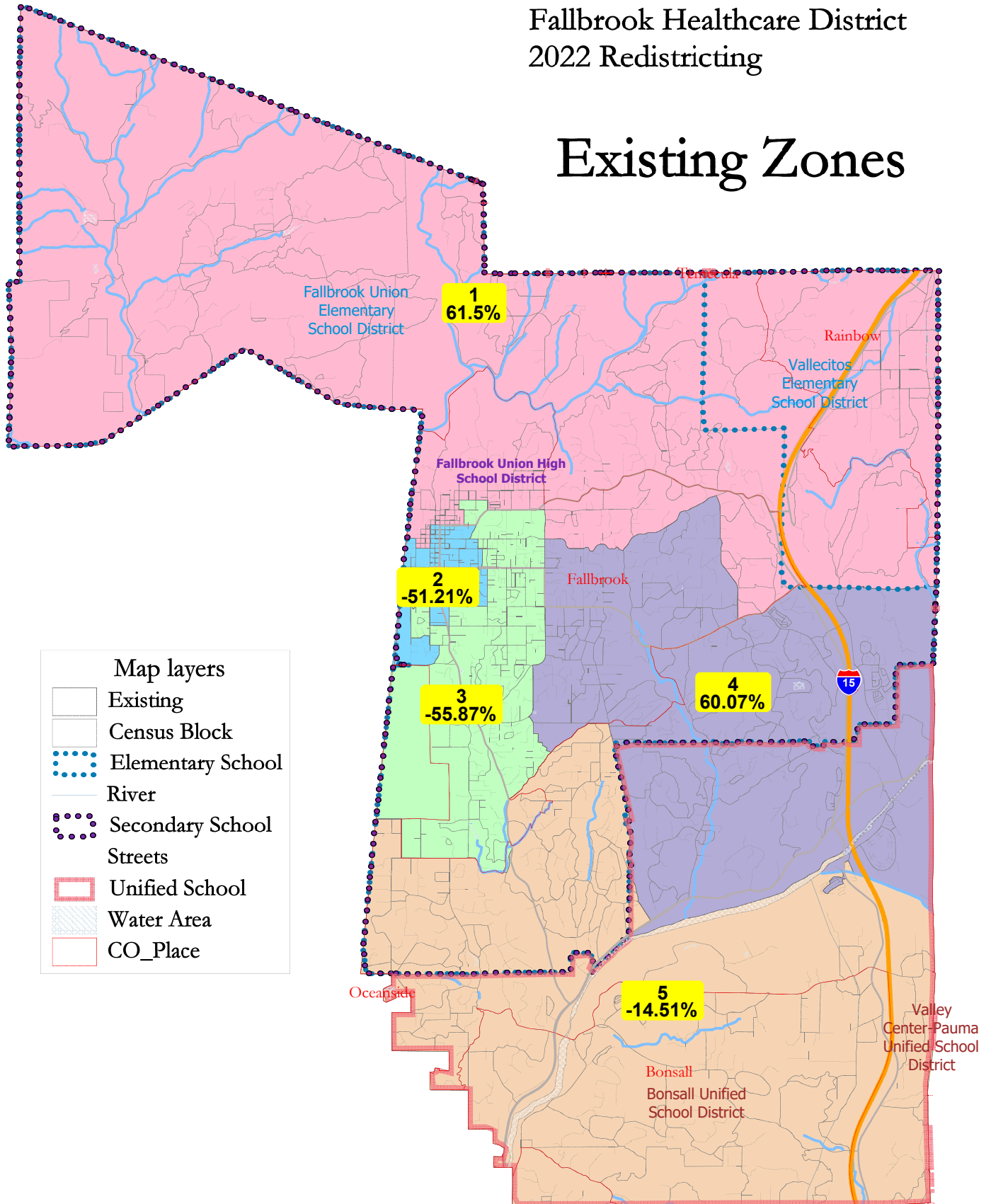


MAPS AND STATISTICS

Existing Map
Proposed Green Map
Proposed Orange Map

Fallbrook Healthcare District 2022 Redistricting

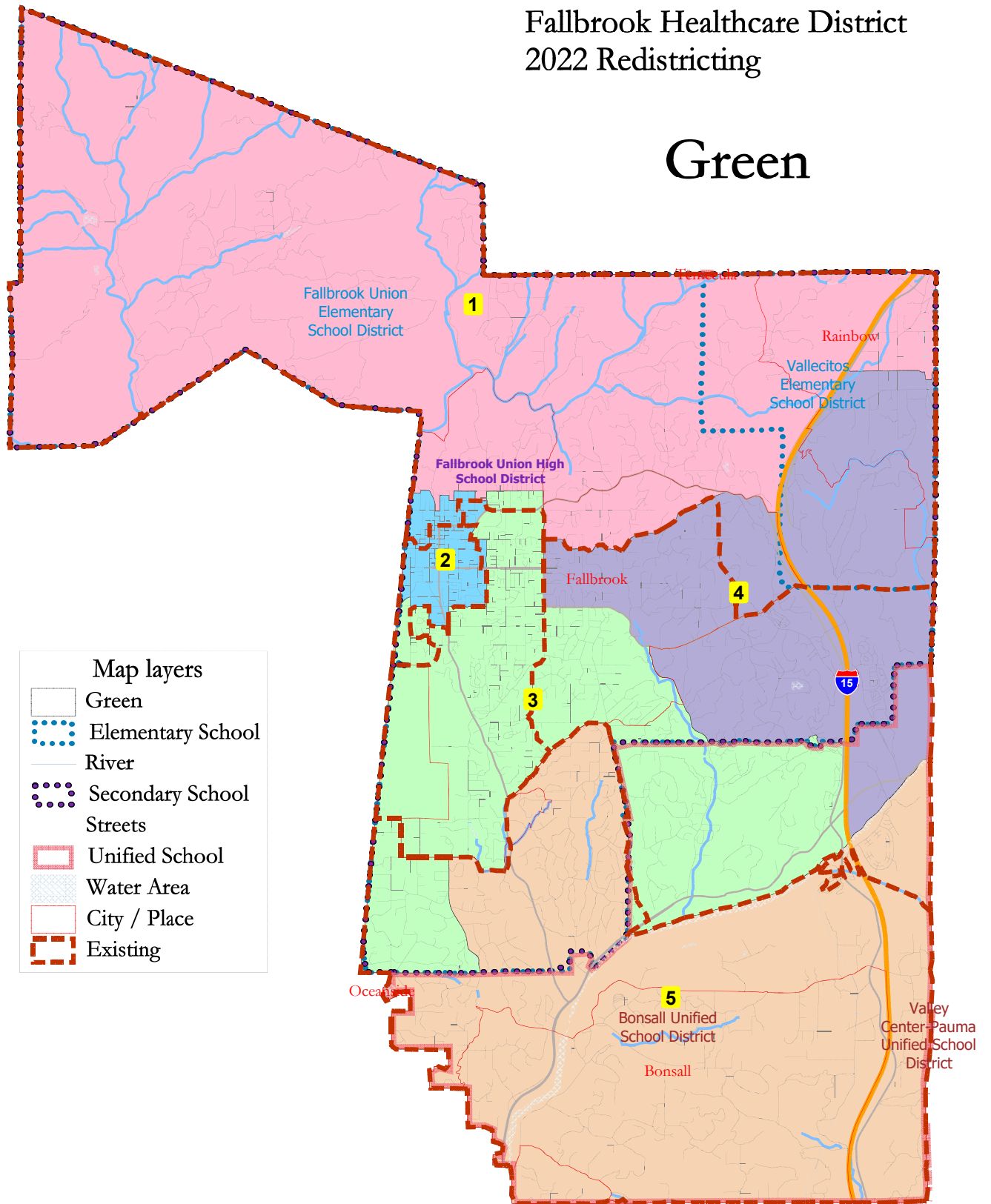
Existing Zones



Existing Zones							
District		1	2	3	4	5	Total
	Total Pop	18,198	5,498	4,973	18,037	9,633	56,339
	Deviation from ideal	6,930	-5,770	-6,295	6,769	-1,635	13,225
	% Deviation	61.50%	-51.21%	-55.87%	60.07%	-14.51%	117.37%
Total Pop	% Hisp	29.1%	31%	46%	52%	33%	39%
	% NH White	62%	55%	44%	39%	57%	51%
	% NH Black	2%	2%	2%	2%	1%	2%
	% Asian-American	4%	7%	5%	4%	5%	5%
Citizen Voting Age Pop	Total	13,599	3,394	3,178	10,673	6,634	37,478
	% Hisp	18%	24%	30%	33%	25%	25%
	% NH White	75%	70%	57%	57%	69%	67%
	% NH Black	2%	2%	2%	4%	1%	2%
	% Asian/Pac.Isl.	4%	3%	10%	5%	4%	5%
Voter Registration (Nov 2020)	Total	12,581	3,448	3,081	9,294	6,174	34,578
	% Latino est.	17%	22%	30%	30%	19%	22%
	% Spanish-Surnamed	15%	20%	27%	27%	17%	20%
	% Asian-Surnamed	2%	2%	1%	1%	2%	2%
	% Filipino-Surnamed	1%	2%	2%	1%	1%	1%
	% NH White est.	80%	72%	67%	67%	78%	74%
	% NH Black	2%	3%	3%	3%	1%	2%
Voter Turnout (Nov 2020)	Total	10,904	2,970	2,576	7,638	5,287	29,375
	% Latino est.	15%	20%	26%	26%	16%	20%
	% Spanish-Surnamed	14%	18%	24%	24%	15%	18%
	% Asian-Surnamed	1%	2%	1%	1%	2%	2%
	% Filipino-Surnamed	1%	1%	1%	1%	1%	1%
	% NH White est.	82%	74%	70%	70%	80%	77%
	% NH Black	2%	3%	3%	3%	1%	2%
Voter Turnout (Nov 2018)	Total	8,471	1,970	1,717	5,370	4,038	21,566
	% Latino est.	11%	16%	22%	20%	14%	15%
	% Spanish-Surnamed	10%	15%	20%	19%	13%	14%
	% Asian-Surnamed	1%	1%	1%	1%	2%	1%
	% Filipino-Surnamed	1%	1%	2%	1%	0%	1%
	% NH White est.	86%	80%	74%	76%	83%	81%
	% NH Black est.	2%	2%	3%	2%	1%	2%
ACS Pop. Est.	Total	17,426	4,591	4,709	17,672	9,142	53,540
Age	age0-19	21%	20%	26%	27%	26%	24%
	age20-60	45%	47%	50%	53%	46%	48%
	age60plus	35%	33%	23%	20%	28%	28%
Immigration	immigrants	17%	20%	18%	24%	19%	20%
	naturalized	58%	56%	56%	48%	66%	55%
Language spoken at home	english	80%	75%	69%	58%	74%	70%
	spanish	15%	20%	25%	39%	22%	25%
	asian-lang	2%	3%	3%	2%	2%	2%
	other lang	3%	2%	3%	2%	2%	2%
Language Fluency	Speaks Eng. "Less than Very Well"	6%	7%	8%	19%	8%	11%
Education (among those age 25+)	hs-grad	46%	48%	49%	44%	41%	45%
	bachelor	22%	20%	21%	17%	24%	21%
	graduatedegree	15%	11%	8%	9%	13%	12%
Child in Household	child-under18	26%	25%	36%	37%	31%	31%
Pct of Pop. Age 16+	employed	54%	55%	61%	62%	57%	58%
Household Income	income 0-25k	12%	9%	15%	16%	12%	13%
	income 25-50k	15%	24%	24%	22%	20%	20%
	income 50-75k	16%	15%	16%	19%	15%	17%
	income 75-200k	44%	43%	38%	37%	41%	41%
	income 200k-plus	12%	9%	8%	6%	13%	10%
Housing Stats	single family	93%	91%	77%	70%	84%	83%
	multi-family	7%	9%	23%	30%	16%	17%
	rented	21%	26%	38%	43%	33%	32%
	owned	79%	74%	62%	57%	67%	68%
Total population data from the 2020 Decennial Census.							
Surname-based Voter Registration and Turnout data from the California Statewide Database.							
Latino voter registration and turnout data are Spanish-surname counts adjusted using Census Population Department undercount estimates. NH White and NH Black registration and turnout counts estimated by NDC. Citizen Voting Age Pop., Age, Immigration, and other demographics from the 2015-2019 American Community Survey and Special Tabulation 5-year data.							

Fallbrook Healthcare District 2022 Redistricting

Green



- Map layers
- Green
 - Elementary School
 - River
 - Secondary School
 - Streets
 - Unified School
 - Water Area
 - City / Place
 - Existing

Green							
District		1	2	3	4	5	Total
	Total Pop	11,312	11,126	11,497	11,069	11,335	56,339
	Deviation from ideal	44	-142	229	-199	67	428
	% Deviation	0.39%	-1.26%	2.03%	-1.77%	0.59%	3.80%
Total Pop	% Hisp	31.9%	28%	34%	60%	40%	39%
	% NH White	60%	60%	55%	31%	51%	51%
	% NH Black	1%	2%	2%	3%	2%	2%
	% Asian-American	4%	6%	6%	4%	5%	5%
Citizen Voting Age Pop	Total	8,531	7,641	7,987	5,788	7,532	37,478
	% Hisp	20%	20%	23%	37%	30%	25%
	% NH White	75%	73%	66%	53%	64%	67%
	% NH Black	1%	2%	2%	6%	1%	2%
	% Asian/Pac.Isl.	3%	4%	8%	3%	4%	5%
Voter Registration (Nov 2020)	Total	7,478	7,577	7,750	5,082	6,691	34,578
	% Latino est.	18%	18%	21%	36%	23%	22%
	% Spanish-Surnamed	16%	17%	19%	33%	21%	20%
	% Asian-Surnamed	1%	2%	1%	1%	2%	2%
	% Filipino-Surnamed	1%	1%	1%	2%	1%	1%
	% NH White est.	80%	77%	76%	59%	73%	74%
	% NH Black	1%	3%	2%	4%	1%	2%
Voter Turnout (Nov 2020)	Total	6,471	6,562	6,664	4,028	5,650	29,375
	% Latino est.	16%	16%	18%	32%	20%	20%
	% Spanish-Surnamed	15%	15%	17%	29%	19%	18%
	% Asian-Surnamed	1%	2%	1%	2%	2%	2%
	% Filipino-Surnamed	1%	1%	1%	1%	1%	1%
	% NH White est.	82%	79%	79%	63%	76%	77%
	% NH Black	1%	3%	2%	4%	1%	2%
Voter Turnout (Nov 2018)	Total	5,071	4,756	4,918	2,605	4,216	21,566
	% Latino est.	11%	12%	14%	24%	17%	15%
	% Spanish-Surnamed	11%	11%	13%	23%	16%	14%
	% Asian-Surnamed	1%	1%	1%	2%	2%	1%
	% Filipino-Surnamed	1%	1%	1%	1%	1%	1%
	% NH White est.	86%	83%	83%	71%	79%	81%
	% NH Black est.	1%	3%	1%	3%	1%	2%
ACS Pop. Est.	Total	11,140	9,839	11,208	10,528	10,825	53,540
Age	age0-19	21%	19%	25%	29%	27%	24%
	age20-60	45%	46%	48%	55%	48%	48%
	age60plus	34%	35%	27%	16%	25%	28%
Immigration	immigrants	17%	19%	19%	26%	20%	20%
	naturalized	56%	59%	54%	47%	63%	55%
Language spoken at home	english	79%	80%	73%	52%	68%	70%
	spanish	16%	16%	22%	46%	28%	25%
	asian-lang	2%	2%	2%	1%	2%	2%
	other lang	4%	2%	2%	1%	2%	2%
Language Fluency	Speaks Eng. "Less than Very Well"	7%	5%	9%	22%	11%	11%
Education (among those age 25+)	hs-grad	46%	47%	44%	44%	44%	45%
	bachelor	22%	21%	23%	16%	21%	21%
	graduatedegree	15%	13%	13%	6%	11%	12%
Child in Household	child-under18	27%	25%	32%	39%	35%	31%
Pct of Pop. Age 16+	employed	52%	55%	58%	65%	58%	58%
Household Income	income 0-25k	14%	9%	13%	17%	13%	13%
	income 25-50k	15%	19%	18%	24%	22%	20%
	income 50-75k	17%	15%	16%	22%	15%	17%
	income 75-200k	43%	44%	43%	33%	40%	41%
	income 200k-plus	11%	13%	10%	5%	10%	10%
Housing Stats	single family	92%	93%	86%	59%	81%	83%
	multi-family	8%	7%	14%	41%	19%	17%
	rented	23%	21%	28%	53%	36%	32%
	owned	77%	79%	72%	47%	64%	68%

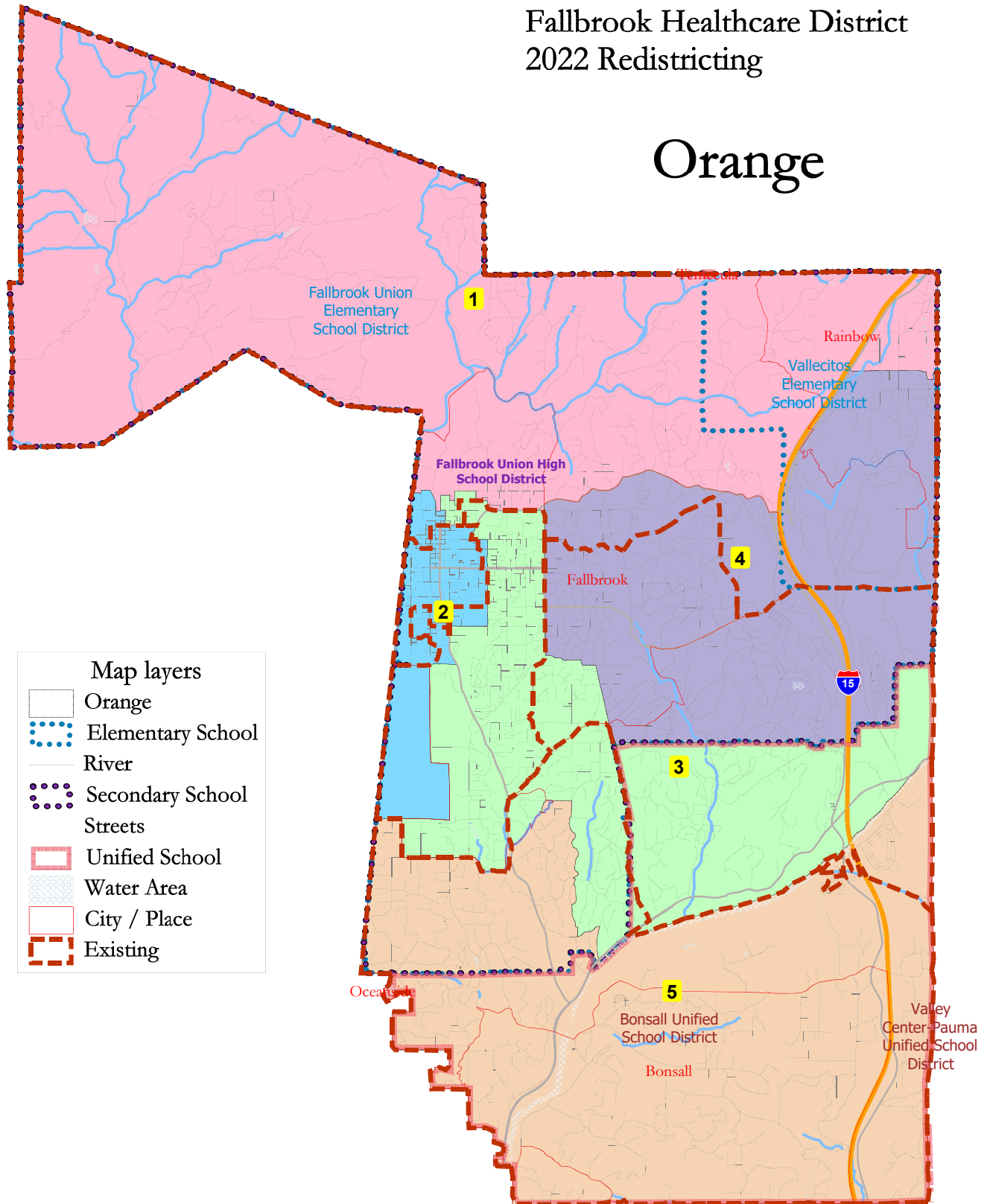
Total population data from the 2020 Decennial Census.

Surname-based Voter Registration and Turnout data from the California Statewide Database.

Latino voter registration and turnout data are Spanish-surname counts adjusted using Census Population Department undercount estimates. NH White and NH Black registration and turnout counts estimated by NDC. Citizen Voting Age Pop., Age, Immigration, and other demographics from the 2015-2019 American Community Survey and Special Tabulation 5-year data.

Fallbrook Healthcare District 2022 Redistricting

Orange



Orange							
District		1	2	3	4	5	Total
	Total Pop	11,199	11,390	11,214	11,318	11,218	56,339
	Deviation from ideal	-69	122	-54	50	-50	191
	% Deviation	-0.61%	1.08%	-0.48%	0.44%	-0.44%	1.70%
Total Pop	% Hisp	32.1%	35%	34%	53%	40%	39%
	% NH White	59%	54%	55%	38%	50%	51%
	% NH Black	1%	2%	2%	3%	2%	2%
	% Asian-American	4%	5%	6%	4%	5%	5%
Citizen Voting Age Pop	Total	8,447	7,614	7,609	6,292	7,517	37,478
	% Hisp	20%	25%	21%	34%	29%	25%
	% NH White	75%	68%	69%	56%	64%	67%
	% NH Black	1%	2%	3%	5%	2%	2%
	% Asian/Pac.Isl.	3%	5%	6%	4%	5%	5%
Voter Registration (Nov 2020)	Total	7,388	7,267	7,171	5,811	6,941	34,578
	% Latino est.	18%	23%	19%	31%	23%	22%
	% Spanish-Surnamed	17%	21%	17%	28%	21%	20%
	% Asian-Surnamed	1%	2%	2%	1%	2%	2%
	% Filipino-Surnamed	1%	1%	1%	1%	1%	1%
	% NH White est.	79%	74%	76%	65%	74%	74%
	% NH Black	1%	2%	3%	3%	1%	2%
Voter Turnout (Nov 2020)	Total	6,375	6,190	6,203	4,723	5,884	29,375
	% Latino est.	16%	20%	17%	27%	20%	20%
	% Spanish-Surnamed	15%	19%	15%	24%	18%	18%
	% Asian-Surnamed	1%	2%	2%	1%	2%	2%
	% Filipino-Surnamed	1%	1%	1%	1%	1%	1%
	% NH White est.	81%	76%	78%	69%	76%	77%
	% NH Black	1%	2%	3%	3%	1%	2%
Voter Turnout (Nov 2018)	Total	5,015	4,357	4,633	3,190	4,371	21,566
	% Latino est.	12%	15%	14%	20%	16%	15%
	% Spanish-Surnamed	11%	14%	13%	18%	15%	14%
	% Asian-Surnamed	1%	1%	1%	1%	2%	1%
	% Filipino-Surnamed	1%	1%	1%	1%	1%	1%
	% NH White est.	86%	82%	82%	76%	80%	81%
	% NH Black est.	1%	2%	3%	3%	1%	2%
ACS Pop. Est.	Total	11,035	10,414	10,462	10,637	10,991	53,540
Age	age0-19	21%	21%	22%	28%	28%	24%
	age20-60	45%	47%	49%	53%	48%	48%
	age60plus	34%	32%	29%	19%	23%	28%
Immigration	immigrants	17%	20%	19%	25%	20%	20%
	naturalized	56%	54%	58%	48%	61%	55%
Language spoken at home	english	79%	75%	75%	55%	68%	70%
	spanish	16%	21%	21%	41%	28%	25%
	asian-lang	2%	2%	3%	2%	2%	2%
	other lang	4%	3%	1%	2%	2%	2%
Language Fluency	Speaks Eng. "Less than Very Well"	7%	7%	9%	20%	11%	11%
Education (among those age 25+)	hs-grad	46%	48%	44%	44%	44%	45%
	bachelor	22%	21%	21%	17%	22%	21%
	graduatedegree	14%	11%	14%	8%	11%	12%
Child in Household	child-under18	27%	28%	29%	37%	37%	31%
Pct of Pop. Age 16+	employed	52%	55%	59%	64%	58%	58%
Household Income	income 0-25k	14%	12%	12%	16%	13%	13%
	income 25-50k	15%	23%	17%	21%	21%	20%
	income 50-75k	17%	16%	16%	20%	14%	17%
	income 75-200k	43%	40%	43%	36%	41%	41%
	income 200k-plus	11%	9%	12%	6%	11%	10%
Housing Stats	single family	92%	86%	88%	65%	81%	83%
	multi-family	8%	14%	12%	35%	19%	17%
	rented	23%	28%	26%	47%	37%	32%
	owned	77%	72%	74%	53%	63%	68%

Total population data from the 2020 Decennial Census.

Surname-based Voter Registration and Turnout data from the California Statewide Database.

Latino voter registration and turnout data are Spanish-surname counts adjusted using Census Population Department undercount estimates. NH White and NH Black registration and turnout counts estimated by NDC. Citizen Voting Age Pop., Age, Immigration, and other demographics from the 2015-2019 American Community Survey and Special Tabulation 5-year data.