



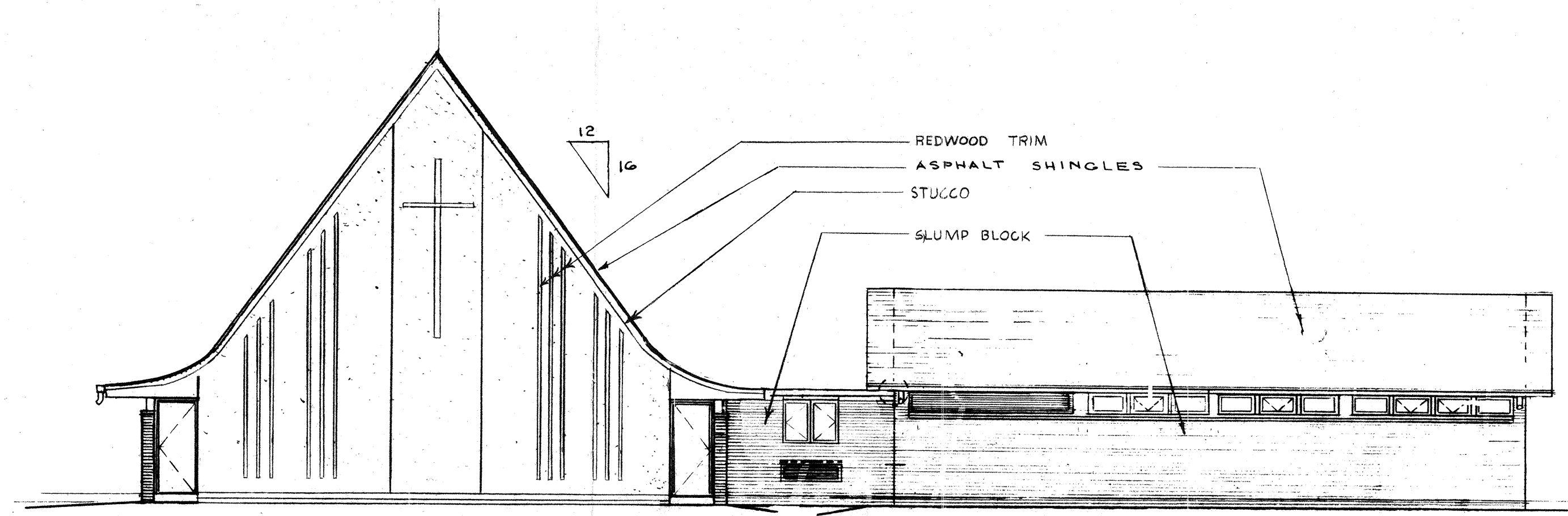
ARCHITECT
GERALD S. VANSELOW
GENERAL BOARD FOR HOME MISSIONS
WISCONSIN EVANGELICAL LUTHERAN SYNOD
3512 W. NORTH AVE. MILWAUKEE, WISC. 53208

A NEW CHURCH HOME
FOR: ST. STEPHEN EV. LUTHERAN CHURCH
1650 EAST MISSION ROAD
FALLBROOK, CALIFORNIA
PROTOTYPE PLAN NO. A-III-W/F-2-G

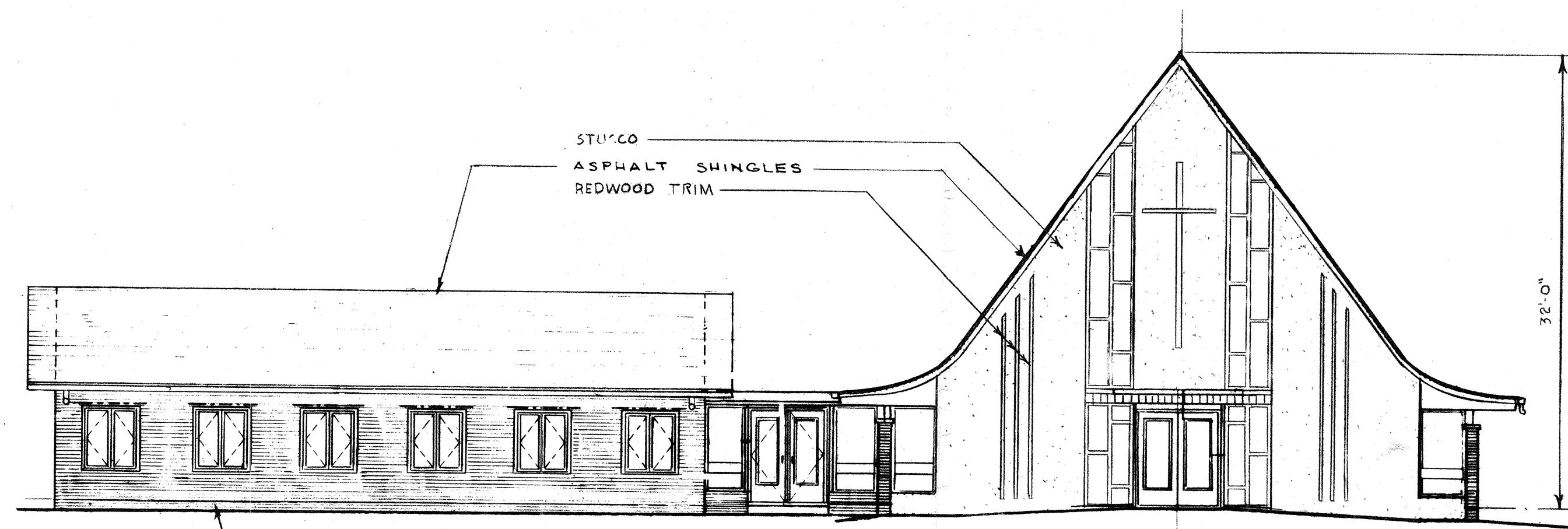
ELEVATION
SECTIONS

REV. 4/13/77
JOB # 7620
DATE 12-23-76

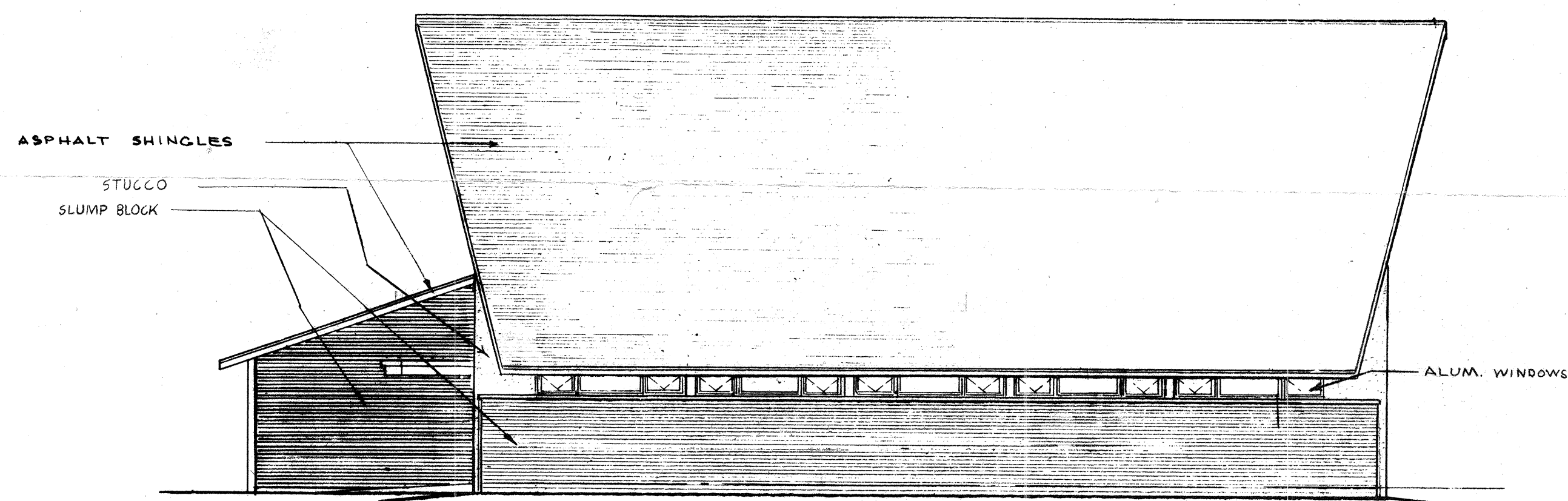
DRAWING NO.
P-2



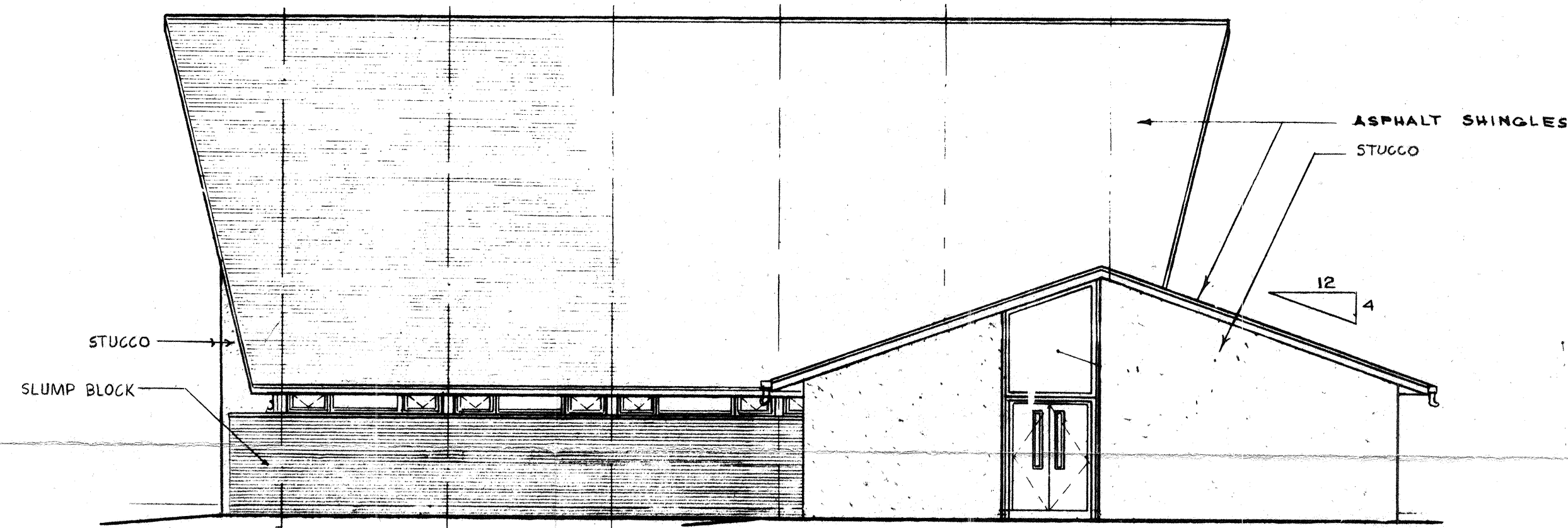
REAR ELEVATION
SCALE: 1/8" = 1'-0"



FRONT ELEVATION
SCALE: 1/8" = 1'-0"



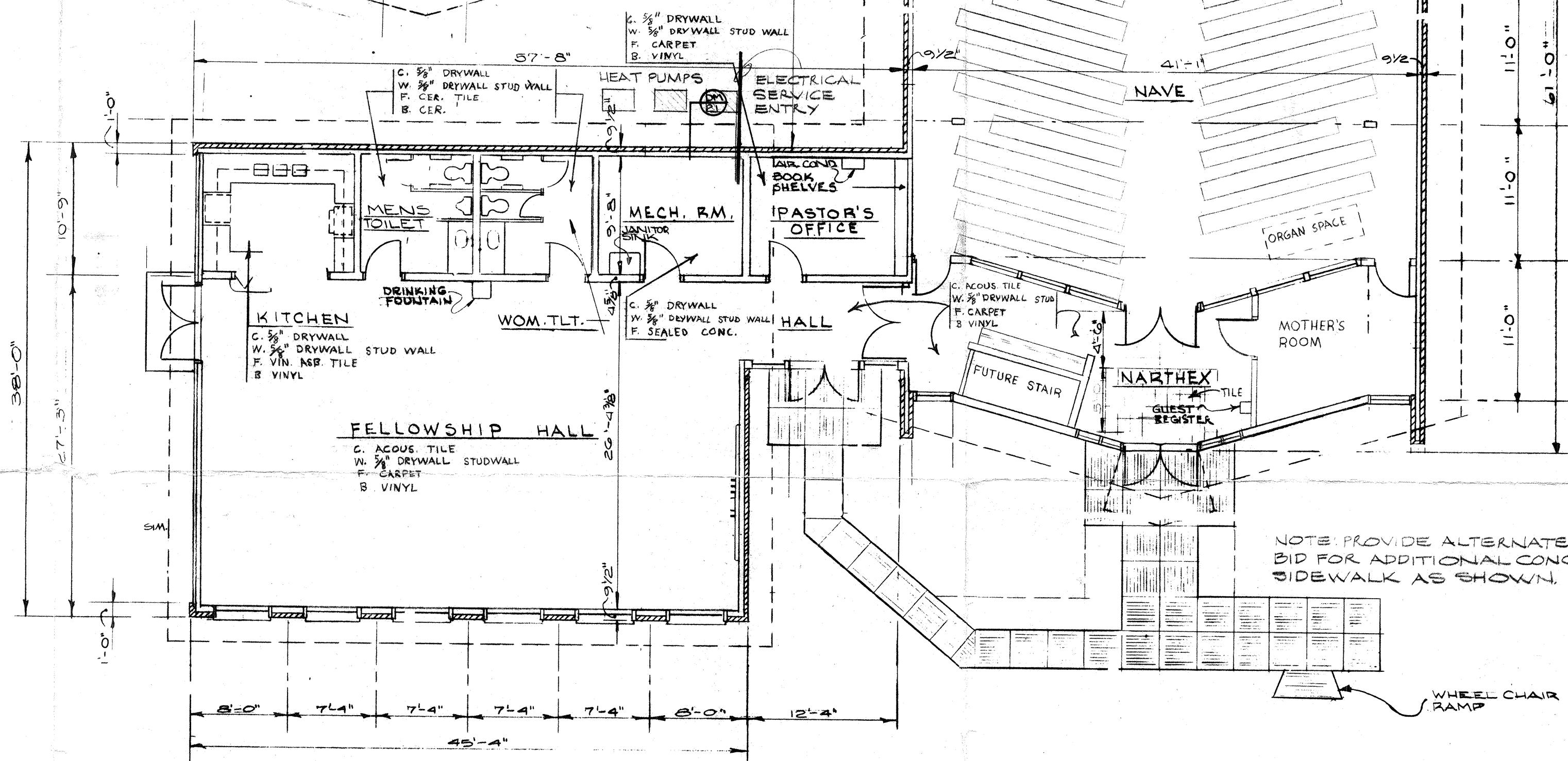
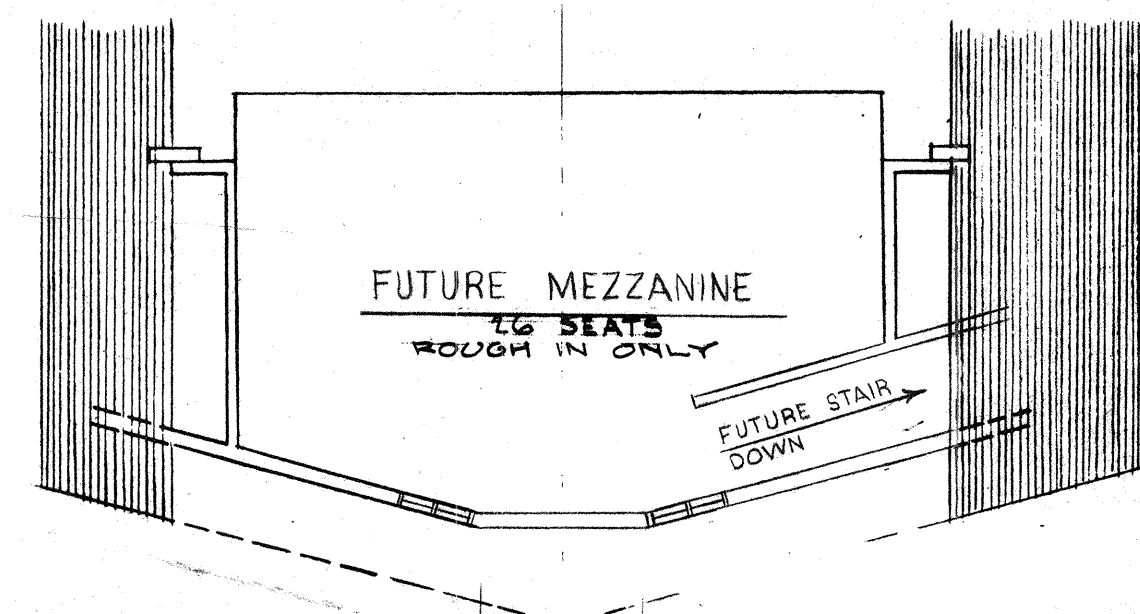
RIGHT ELEVATION
SCALE: 1/8" = 1'-0"



LEFT ELEVATION
SCALE: 1/8" = 1'-0"

DATA SCHEDULE						
TYPE	A-III-W/F-2-G	266				
PHASE	WORSHIP	MEZZANINE	FELLOWSHIP	EDUCATIONAL	OTHER	TOTAL
1	2,360		1,290		710	4,360
2		450				450
3	820		720			1,540
4				7,000		7,000
TOTAL PROJECTED AREA SQ. FT.						13,350

GENERAL NOTES:
1. HEATING TO BE WARM AIR BASE BOARD W/AIR CONDITIONING
IN USE OF HEAT PUMP SYSTEM.
2. ELECTRICAL SERVICE TO BE SINGLE OR THREE PHASE SERVICE
W/INDIRECT LIGHTING IN THE NAVE (PUT CHANDELIER)



FIRST FLOOR PLAN
SCALE: 1/8" = 1'-0"

